

© ROSENBERGER HOCHFREQUENZTECHNIK GMBH & Co. KG
 The reproduction, distribution and utilization of this document as well as the communication of its contents to others without express authorization is prohibited. Offenders will be held liable for the payment of damages. All rights reserved in the event of the grant of patent, utility model or design.

PD_FB_01

-METRIC-

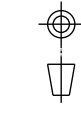
ISO-Projektion
 Methode 1

| 1 | | 2 | | 3 | | 4 | | |
|--------------------------|---|-------------------------------------|--|---|---|---|----------------------------------|--|
| A | A | Kabel / cable | | | | | | |
| | B | Crimphülse / crimping sleeve | | | | | | |
| | C | Innenleiter / center contact | | | | | | |
| | D | Steckerkörper / plug body | | | | | | |
| | E | Kunststoffgehäuse / plastic housing | | | | | | |
| | E1 | Sekundärsicherung / secondary lock | | | | | | |
| | F | Deckel / cover | | | | | | |
| B | Teile Nummer <i>part number</i> | | Kabelgruppe <i>cable group</i> | | Werkzeug 1 <i>tool 1</i> | | Werkzeug 2 <i>tool 2</i> | |
| | 59K28A-102XX-Y 59K28C-102XX-Y 59K28D-102XX-Y 59K28H-102XX-Y 59K28L- 102XX-Y | | 02 / RG 174 02 / RG 316/U-d 02 / DACAR 462 | | 11W150-402 | | 11W150-402 | |
| | 59K28H-103XX-Y | | 03 / RG 179 B/U-d 03 / 1.5DS-QFB (TA) | | 11W150-402 | | 11W15B-503 | |
| | 59K28A-106XX-Y 59K28C-106XX-Y 59K28D-106XX-Y 59K28H-106XX-Y | | 06 / RG 58 | | 11W150-506 | | 11W150-506 | |
| | 59K28A-110XX-Y | | 10 / RG 59 10 / RG 62 | | 11W150-509 | | 11W150-509 | |
| C | 59K28A-1D6XX-Y 59K28H-1D6XX-Y | | D6 / DACAR 077 | | 11W150-506 | | 11W150-506 | |
| | 59K28A-1D8XX-Y 59K28H-1D8XX-Y | | D8 / B-75-1.7-2.7 | | 11W150-402 | | 11W150-402 | |
| | 59K28H-1E4XX-Y | | E4 / G & G 69337 E4 / DACAR 037 E4 / Draka FL09YBCYW 1.1/2.9 DKB | | 11W15F-5E4 | | 11W15F-5E4 | |
| | 59K28K-1E4XX-Y | | E4 / DACAR 037 E4 / Draka FL09YBCYW 1.1/2.9 DKB | | 11W15S-5E4 | | 11W15S-5E4 | |
| D | 59K28H-1E7XX-Y | | E7 / B-61-1.87-2.9 | | 11W150-402 | | 11W150-402 | |
| | 59K28A-1M4XX-Y 59K28C-1M4XX-Y 59K28D-1M4XX-Y 59K28H-1M4XX-Y | | M4 / RTK 031 | | 11W150-504 | | 11W150-504 | |
| | 59K28H-1E4XX-Y | | E4 / G & G 69337 E4 / DACAR 037 E4 / Draka FL09YBCYW 1.1/2.9 DKB | | 11W15F-5E4 | | 11W15F-5E4 | |
| E | 59K28K-1E4XX-Y | | E4 / DACAR 037 E4 / Draka FL09YBCYW 1.1/2.9 DKB | | 11W15S-5E4 | | 11W15S-5E4 | |
| | 59K28H-1E7XX-Y | | E7 / B-61-1.87-2.9 | | 11W150-402 | | 11W150-402 | |
| | 59K28A-1M4XX-Y 59K28C-1M4XX-Y 59K28D-1M4XX-Y 59K28H-1M4XX-Y | | M4 / RTK 031 | | 11W150-504 | | 11W150-504 | |
| | 59K28H-1E4XX-Y | | E4 / G & G 69337 E4 / DACAR 037 E4 / Draka FL09YBCYW 1.1/2.9 DKB | | 11W15F-5E4 | | 11W15F-5E4 | |
| | 59K28K-1E4XX-Y | | E4 / DACAR 037 E4 / Draka FL09YBCYW 1.1/2.9 DKB | | 11W15S-5E4 | | 11W15S-5E4 | |
| F | Rosenberger | | general tolerance ISO 2768 mH | | assembly instr.: --- panel piercing: --- | | scale: 3:2 series: --- --- | |
| | crimp insert: --- cable: --- --- | | date name | | Montageanleitung assembly instruction | | | |
| | drawn 14.01.2004 H_Muehlfelln | | check 09.01.2017 T_Koschel | | | | | |
| | appr. 13.01.2017 C_Anfang | | | | | | | |
| | u00 16-1628 M_Steinbach 20.12.2016 | | | | | | | |
| | t00 15-1459 M_Kolbe 29.04.2016 | | | | | | | |
| | s00 14-1556 T_Koschel 27.10.2014 | | | | | | | |
| | r00 13-1291 M2_Mueller 14.11.2013 | | | | drawing-no.: | | sheet: | |
| | q00 13-0637 M_Kotewitz 17.06.2013 | | | | MA_59V042 | | 1 | |
| | p00 13-0335 R_Hochheim 27.03.2013 | | | | remarks: . | | of: 9 | |
| rev. change-no name date | | | | | | | | |

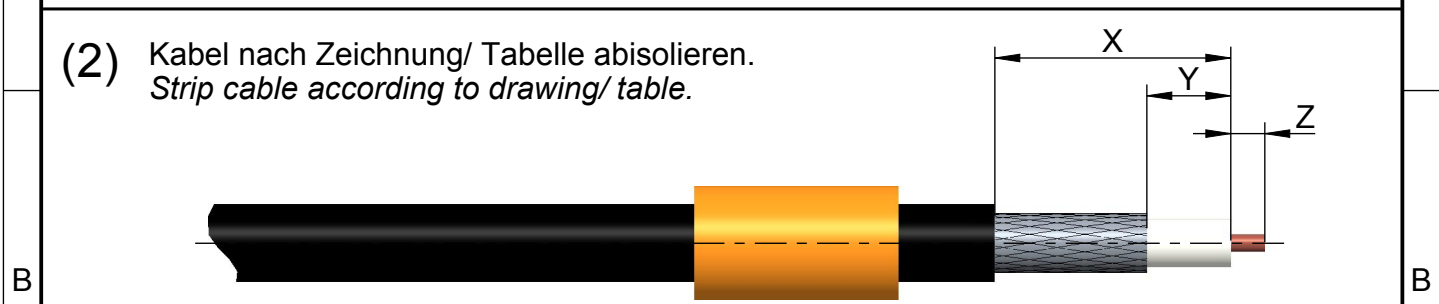
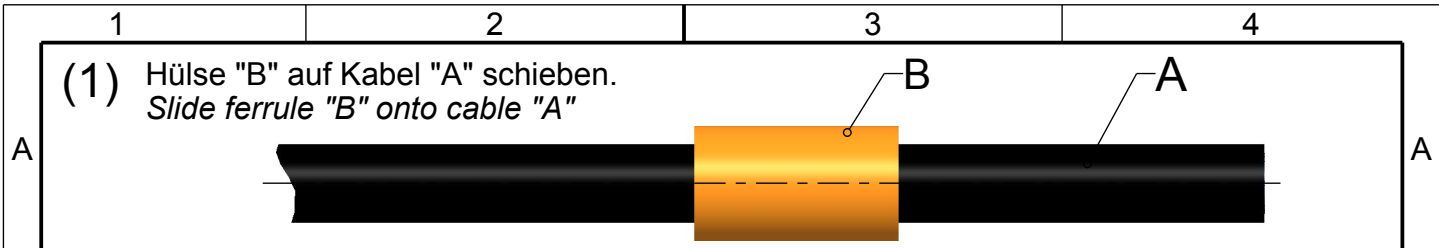
© ROSENBERGER HOCHFREQUENZTECHNIK GMBH & Co. KG
 The reproduction, distribution and utilization of this document as well as the communication of its contents to others without express authorization is prohibited. Offenders will be held liable for the payment of damages. All rights reserved in the event of the grant of patent, utility model or design.

PD_FB_01

-METRIC-



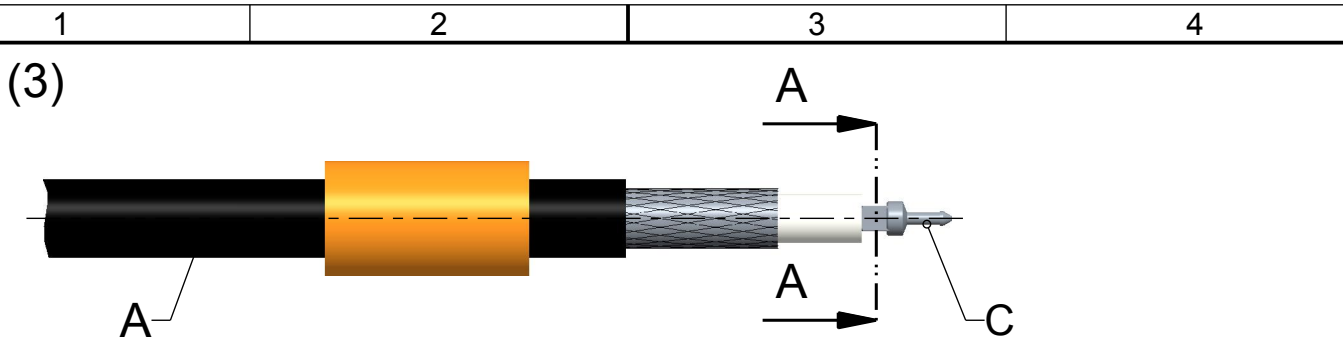
ISO-Projektion
 Methode 1



| Teile Nummer <i>part number</i> | Kabelgruppe <i>cable group</i> | X | Y | Z |
|--|--|----------|---------|---------|
| 59K28A-102XX-Y 59K28C-102XX-Y 59K28D-102XX-Y 59K28H-102XX-Y 59K28L-102XX-Y | 02 / RG 174 02 / RG 316/U-d 02 / DACAR 462 | 9.0±0.2 | 3.8±0.2 | 1.5±0.2 |
| 59K28H-103XX-Y | 03 / RG 179 B/U-d 03 / 1.5DS-QFB (TA) | 9.0±0.2 | 3.8±0.2 | 1.5±0.2 |
| 59K28A-106XX-Y 59K28C-106XX-Y 59K28D-106XX-Y 59K28H-106XX-Y | 06 / RG 58 | 11.1±0.2 | 3.1±0.2 | 1.7±0.2 |
| 59K28A-110XX-Y | 10 / RG 59 10 / RG 62 | 7.6±0.2 | 0.5±0.2 | 2.2±0.2 |
| 59K28A-1D6XX-Y 59K28C-1D6XX-Y 59K28D-1D6XX-Y 59K28H-1D6XX-Y | D6 / DACAR 077 | 10.6±0.2 | 2.6±0.2 | 1.7±0.2 |
| 59K28A-1D8XX-Y 59K28H-1D8XX-Y | D8 / B-75-1.7-2.7 | 9.0±0.2 | 3.8±0.2 | 1.5±0.2 |
| 59K28H-1E4XX-Y | E4 / G & G 69337 E4 / DACAR 037 E4 / Draka FL09YBCYW 1.1/2.9 DKB | 11.1±0.2 | 3.1±0.2 | 1.7±0.2 |
| 59K28K-1E4XX-Y | E4 / DACAR 037 E4 / Draka FL09YBCYW 1.1/2.9 DKB | 10.2±0.2 | 2.2±0.2 | 1.7±0.2 |
| 59K28H-1E7XX-Y | E7 / B-61-1.87-2.9 | 9.0±0.2 | 3.8±0.2 | 1.5±0.2 |
| 59K28A-1M4XX-Y 59K28C-1M4XX-Y 59K28D-1M4XX-Y 59K28H-1M4XX-Y | M4 / RTK 031 | 10.4±0.2 | 3.7±0.2 | 1.5±0.2 |

| | | | | | | | | | |
|-----------------------------------|--|--|--|---|--|-----------------|--|---|--|
| Rosenberger | | <i>general tolerance</i> ISO 2768 mH | | <i>assembly instr.:</i> --- <i>panel piercing:</i> --- | | scale: 3:1 | | <i>crimp insert:</i> --- | |
| | | | | | | series: --- | | <i>cable:</i> --- | |
| vertraulich / confidential | | | | <i>date</i> | | <i>name</i> | | Montageanleitung assembly instruction | |
| <i>drawn</i> | | 14.01.2004 | | H_Muehlfelln | | | | | |
| <i>check</i> | | 09.01.2017 | | T_Koschel | | | | | |
| <i>appr.</i> | | 13.01.2017 | | C_Anfang | | | | | |
| <i>s00</i> | | 14-1556 | | T_Koschel | | 27.10.2014 | | | |
| <i>r00</i> | | 13-1291 | | M2_Mueller | | 14.11.2013 | | | |
| <i>q00</i> | | 13-0637 | | M_Kotewitz | | 17.06.2013 | | <i>drawing-no.:</i> MA_59V042 | |
| <i>p00</i> | | 13-0335 | | R_Hochheim | | 27.03.2013 | | | |
| <i>rev. change-no</i> | | <i>name</i> | | <i>date</i> | | <i>remarks:</i> | | <i>of:</i> 9 | |

© ROSENBERGER HOCHFREQUENZTECHNIK GMBH & Co. KG
 The reproduction, distribution and utilization of this document as well as the communication of its contents to others without express authorization is prohibited. Offenders will be held liable for the payment of damages. All rights reserved in the event of the grant of patent, utility model or design.



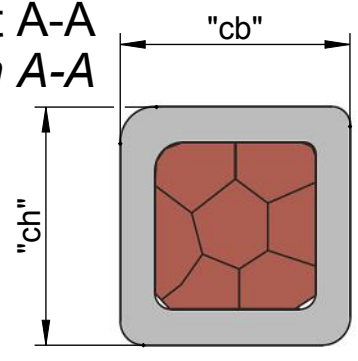
Innenleiter "C" auf den Kabelinnenleiter bis an das Dielektrikum heranschieben und crimpen (Werkzeug 1).

Push center contact "C" on the inner conductor of the cable up to the dielectric and crimp it (tool 1).

Der "B-Crimp" ist nach DIN IEC 60352-2:2014-04, oder OEM Werksnorm auszuführen.

"B-crimp" according to DIN IEC 60352-2:2014-04, or OEM group standard.

**Schnitt A-A
section A-A**



| Kabelgruppe <i>cable group</i> | Crimpmaße <i>crimp dimensions</i> | | Auszugskraft <i>tensile strength</i> |
|--|---|--|---|
| | Crimpbreite "cb" <i>crimp width "cb"</i> | Crimphöhe "ch" <i>crimp height "ch"</i> | |
| 02 / RG 174 02 / RG 316/U-d 02 / DACAR 462 | 0.73±0.03 | 0.73± 0.03 | >20N |
| 03 / RG 179 B/U-d 03 / 1.5DS-QFB (TA) | 0.73± 0.03 | 0.73± 0.03 | >20N |
| 06 / RG 58 | 1.1± 0.03 | 1.1± 0.03 | >60N |
| 10 / RG 59 10 / RG 62 | 1.2± 0.03 | 1.2± 0.03 | >20N |
| D6 / DACAR 077 | 1.1± 0.03 | 1.1± 0.03 | >6N |
| D8 / B-75-1.7-2.7 | 0.73± 0.03 | 0.73± 0.03 | >12N |
| E4 / G & G 69337 E4 / DACAR 037 E4 / Draka FL09YBCYW 1.1/2.9 DKB | 1.3± 0.05 | 1.3± 0.05 | >60N |
| E7 / B-61-1.87-2.9 | 0.73± 0.03 | 0.73± 0.03 | >20N |
| M4 / RTK 031 | 1.1± 0.03 | 1.1± 0.03 | >60N |

Die Steckerfunktion darf durch überstehende Einzeldrähte nicht beeinträchtigt werden!
The plug function may not be impaired by supernatant single wires!

| | | | | |
|----------------------------|-------------------|----------------------|--|---|
| Rosenberger | general tolerance | assembly instr.: --- | scale: 3:1 | crimp insert: --- |
| | ISO 2768 mH | panel piercing: --- | series: --- | cable: --- |
| vertraulich / confidential | | date | Montageanleitung assembly instruction | |
| drawn | 14.01.2004 | name | | |
| u00 | 16-1628 | M_Steinbach | 20.12.2016 | drawing-no.: MA_59V042 sheet: 3 of: 9 |
| t00 | 15-1459 | M_Kolbe | 29.04.2016 | |
| s00 | 14-1556 | T_Koschel | 27.10.2014 | |
| r00 | 13-1291 | M2_Mueller | 14.11.2013 | |
| q00 | 13-0637 | M_Kotewitz | 17.06.2013 | |
| p00 | 13-0335 | R_Hochheim | 27.03.2013 | remarks: . |
| rev. | change-no | name | date | |

PD_FB_01

-METRIC-



ISO-Projektion
Methode 1

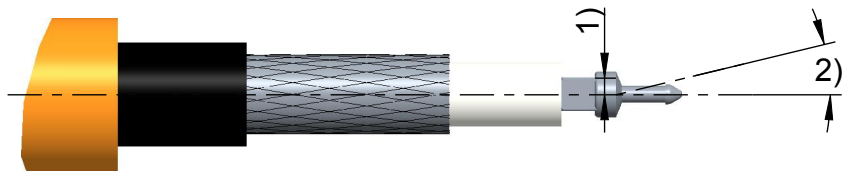
© ROSENBERGER HOCHFREQUENZTECHNIK GMBH & Co. KG
 The reproduction, distribution and utilization of this document as well as the communication of its contents to others without express authorization is prohibited. Offenders will be held liable for the payment of damages. All rights reserved in the event of the grant of patent, utility model or design.

PD_FB_01

-METRIC-

ISO-Projektion
 Methode 1

(4)



Verarbeitungsanforderungen zur weiteren Montage in den Steckerkörper "D":

- 1) Der Achsversatz des Crimps zum Kabel darf max. 0,3mm betragen.
- 2) Die maximale Auslenkung des Innenleiters ist abhängig von dem Konfektionsprozess. Es muss durch ordnungsgemäßes Einführen des Innenleiters sichergestellt werden, dass die Montage in den Außenleiter zuverlässig und kollisionsfrei durchgeführt werden kann.

Processing requirements for assembling into the plug body "D":

- 1) *The offset regarding to cable is allowed to be max. 0,3mm.*
- 2) *The maximum deflection of the inner conductor is dependent on the assembly process. It must be ensured by correct insertion of the inner conductor, that the assembling process into the outer conductor can be performed reliably and without collision.*

| | | | | | | | | | | | | | | | | | |
|-----------------------------------|--|-----------|--|-------------------|--|------------------|--|---|--|-------------------|--|------------|--|------------|--|--------------|--|
| Rosenberger | | | | general tolerance | | assembly instr.: | | scale: 4:1 | | crimp insert: --- | | | | | | | |
| | | | | ISO 2768 | | --- | | panel piercing: --- | | series: --- | | cable: --- | | | | | |
| mH | | | | --- | | --- | | --- | | --- | | | | | | | |
| vertraulich / confidential | | | | date | | name | | Montageanleitung assembly instruction | | | | | | | | | |
| u00 | | 16-1628 | | M_Steinbach | | 20.12.2016 | | | | | | drawn | | 14.01.2004 | | H_Muehlfelln | |
| t00 | | 15-1459 | | M_Kolbe | | 29.04.2016 | | | | | | check. | | 09.01.2017 | | T_Koschel | |
| s00 | | 14-1556 | | T_Koschel | | 27.10.2014 | | | | | | appr. | | 13.01.2017 | | C_Anfang | |
| r00 | | 13-1291 | | M2_Mueller | | 14.11.2013 | | | | | | | | | | | |
| q00 | | 13-0637 | | M_Kotewitz | | 17.06.2013 | | | | | | | | | | | |
| p00 | | 13-0335 | | R_Hochheim | | 27.03.2013 | | | | | | | | | | | |
| rev. | | change-no | | name | | date | | | | drawing-no.: | | sheet: | | | | | |
| | | | | | | | | | | MA_59V042 | | 4 | | | | | |
| | | | | | | | | | | | | of: 9 | | | | | |
| | | | | | | | | | | remarks: . | | | | | | | |

1

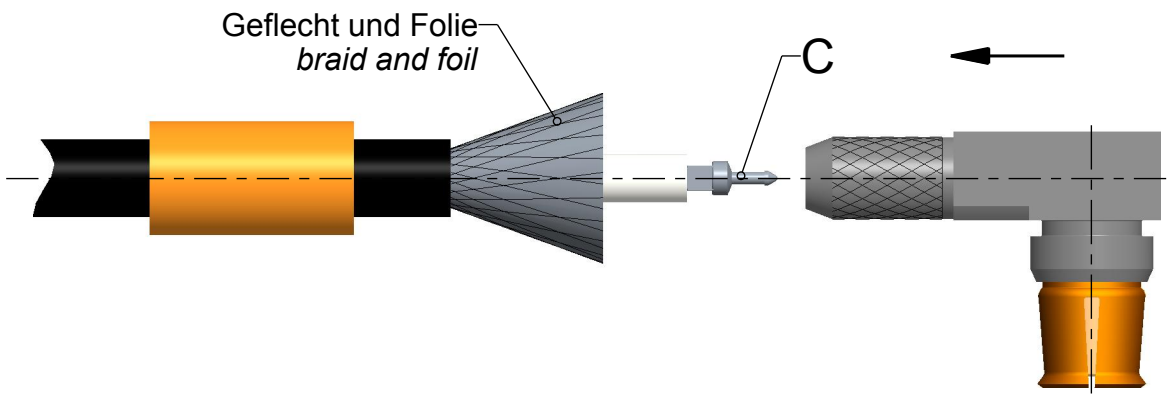
2

3

4

© ROSENBERGER HOCHFREQUENZTECHNIK GMBH & Co. KG
 The reproduction, distribution and utilization of this document as well as the communication of its contents to others without express authorization is prohibited. Offenders will be held liable for the payment of damages. All rights reserved in the event of the grant of patent, utility model or design.

(5)



Geflecht und Folie aufweiten.
 Der Innenleiter "C" darf dabei nicht verbogen werden.

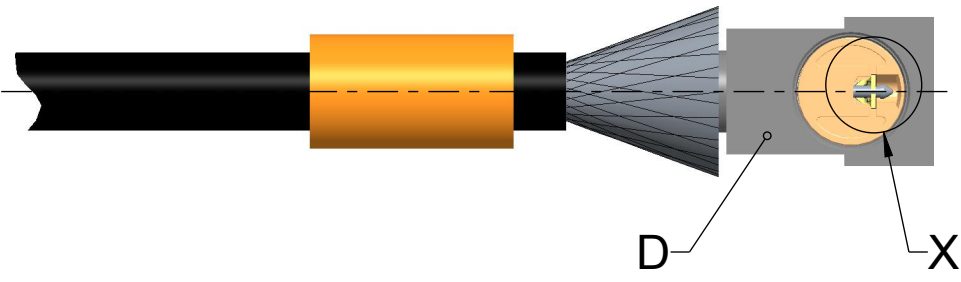
*Splay out the braid and the foil.
 Don't bend the center contact "C" during expanding!*

Alternativ/ alternative:

Geflecht aufweiten und Folie entfernen.
 Der Innenleiter "C" darf dabei nicht verbogen werden.

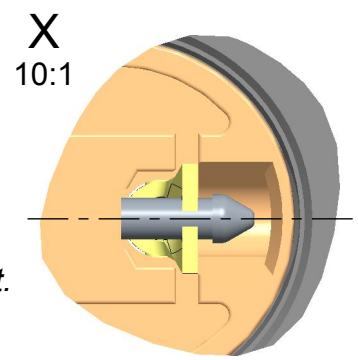
*Splay out the braid and cut and remove the foil.
 Don't bend the center contact "C" during expanding!*

(6)



Vorbereitetes Kabel in den Steckerkörper "D" einschieben bis Innenleiter spürbar einrastet. Die Spitze des Innenleiters "C" muss gut sichtbar über den Mittelkontakt hinausragen. Rotation um die Längsachse ist zu vermeiden, wechselseitiges Rotieren ist nicht erlaubt.

Push the prepared cable into the connector body "D" until the center contact engages perceptible. The top of the center contact "C" must visibly protrude through the centre contact. Rotation around the long axis should be avoided, alternating rotation is prohibited.



Rosenberger

general tolerance
 ISO 2768
 mH

assembly instr.:

 panel piercing:

scale: 3:1 (10:1)
 series: ---

crimp insert: ---
 cable: ---

vertraulich / confidential

| rev. | change-no | name | date |
|------|-----------|-------------|------------|
| u00 | 16-1628 | M_Steinbach | 20.12.2016 |
| t00 | 15-1459 | M_Kolbe | 29.04.2016 |
| s00 | 14-1556 | T_Koschel | 27.10.2014 |
| r00 | 13-1291 | M2_Mueller | 14.11.2013 |
| q00 | 13-0637 | M_Kotewitz | 17.06.2013 |
| p00 | 13-0335 | R_Hochheim | 27.03.2013 |

| | date | name |
|--------|------------|--------------|
| drawn | 14.01.2004 | H_Muehlfelln |
| check. | 09.01.2017 | T_Koschel |
| appr. | 13.01.2017 | C_Anfang |

title: **Montageanleitung
 assembly instruction**

drawing-no.: **MA_59V042**

sheet: 5
 of: 9

remarks: .

ISO-Projektion
 Methode 1

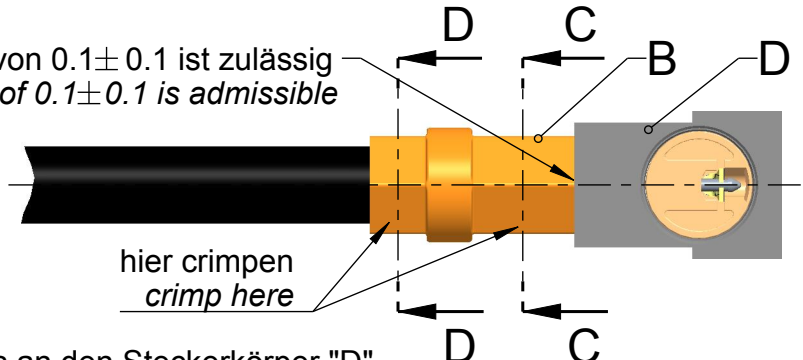
-METRIC-

PD_FB_01

© ROSENBERGER HOCHFREQUENZTECHNIK GMBH & Co. KG
 The reproduction, distribution and utilization of this document as well as the communication of its contents to others without express authorization is prohibited. Offenders will be held liable for the payment of damages. All rights reserved in the event of the grant of patent, utility model or design.

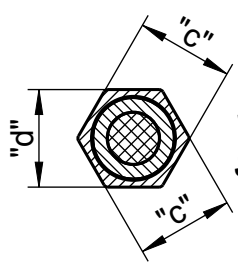
(7)

Spalt von 0.1 ± 0.1 ist zulässig
 gap of 0.1 ± 0.1 is admissible

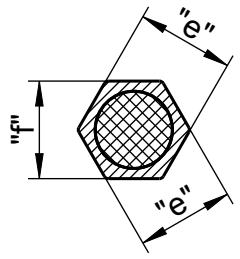


Crimphülse "B" über das Geflecht bis an den Steckerkörper "D" heranschieben und möglichst nahe am Steckerkörper crimpen (Werkzeug 2).

Slide crimping sleeve "B" over the braid up to the connector body "D" as close to the connector body as possible and crimp it (tool 2).



Schnitt C-C
 section C-C



Schnitt D-D
 section D-D

** Werkzeuggebunden
 ** tool related

1) Nur anwendbar für Werkzeug 11W15S-5E4
 1) Only applicable for tool 11W15S-5E4

| Kabelgruppe cable group | Crimpmaße crimp dimensions | | | | Auszugskraft tensile strength |
|---|---------------------------------------|----------------|---------------------------------------|--------------------------------------|----------------------------------|
| | C-C Crimpmaße C-C crimp dimensions | | D-D Crimpmaße D-D crimp dimensions | | |
| | "c" | "d" | "e" | "f" | |
| 02 / RG 174 02 / RG 316/U-d 02 / DACAR 462 | (3.3 ± 0.05) ** | 3.3 ± 0.05 | N.A. | N.A. | >110N |
| 03 / RG 179 B/U-d 03 / 1.5DS-QFB (TA) | (3.3 ± 0.05) ** | 3.3 ± 0.05 | (3.3 ± 0.05) ** | 3.3 ± 0.05 | >110N |
| 06 / RG 58 | (5.35 ± 0.1) ** | 5.35 ± 0.1 | N.A. | N.A. | >110N |
| 10 / RG 59 10 / RG 62 | (6.5 ± 0.1) ** | 6.5 ± 0.1 | N.A. | N.A. | >110N |
| D6 / DACAR 077 | (5.35 ± 0.1) ** | 5.35 ± 0.1 | N.A. | N.A. | >110N |
| D8 / B-75-1.7-2.7 | (3.3 ± 0.05) ** | 3.3 ± 0.05 | N.A. | N.A. | >110N |
| E4 / G & G 69337 | (5.5 ± 0.05) ** | 5.5 ± 0.05 | N.A. | N.A. | >110N |
| E4 / DACAR 037 E4 / Draka FL09YBCYW 1.1/2.9 DKB | (5.5 ± 0.05) ** | 5.5 ± 0.05 | N.A. (5.5 ± 0.05) ** | N.A. 5.5 ± 0.05 ¹⁾ | >110N |
| E7 / B-61-1.87-2.9 | (3.3 ± 0.05) ** | 3.3 ± 0.05 | N.A. | N.A. | >110N |
| M4 / RTK 031 | (4.3 ± 0.05) ** | 4.3 ± 0.05 | N.A. | N.A. | >110N |

Rosenberger

general tolerance
 ISO 2768
 mH

assembly instr.:

 panel piercing:

scale: 3:1
 series: ---

crimp insert: ---
 cable: ---

vertraulich / confidential

| date | | name | |
|-------|------------|--------------|------------|
| drawn | 14.01.2004 | H_Muehlfelln | |
| check | 09.01.2017 | T_Koschel | |
| appr. | 13.01.2017 | C_Anfang | |
| u00 | 16-1628 | M_Steinbach | 20.12.2016 |
| t00 | 15-1459 | M_Kolbe | 29.04.2016 |
| s00 | 14-1556 | T_Koschel | 27.10.2014 |
| r00 | 13-1291 | M2_Mueller | 14.11.2013 |
| q00 | 13-0637 | M_Kotewitz | 17.06.2013 |
| p00 | 13-0335 | R_Hochheim | 27.03.2013 |
| rev. | change-no | name | date |

title: **Montageanleitung
 assembly instruction**

drawing-no.: **MA_59V042**

sheet: **6**
 of: **9**

remarks: .

PD_FB_01
 -METRIC-
 ISO-Projektion
 Methode 1

(8)

A

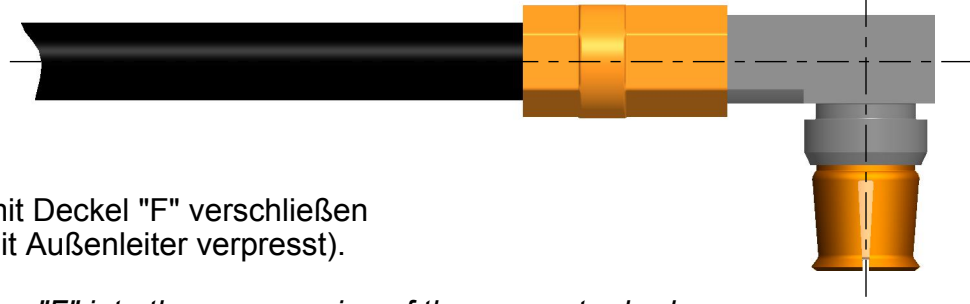
B

C

D

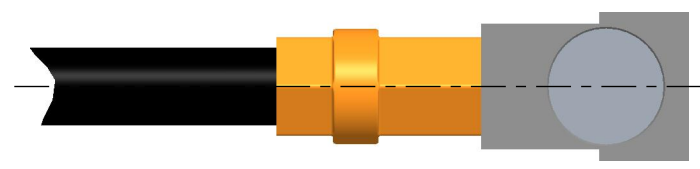
E

F



Öffnung mit Deckel "F" verschließen
 (bündig mit Außenleiter verpresst).

*Press cover "F" into the rear opening of the connector body
 (pressed in flush with outer contact).*



Auflagefläche für die Verpressung des Deckels.
Bearing surface for pressing the cover.



A

B

C

D

E

F

Rosenberger

general tolerance
 ISO 2768
 mH

assembly instr.:

 panel piercing:

scale: 3:1
 series: ---

crimp insert: ---
 cable: ---

vertraulich / confidential

| rev. | change-no | name | date |
|------|-----------|-------------|------------|
| u00 | 16-1628 | M_Steinbach | 20.12.2016 |
| t00 | 15-1459 | M_Kolbe | 29.04.2016 |
| s00 | 14-1556 | T_Koschel | 27.10.2014 |
| r00 | 13-1291 | M2_Mueller | 14.11.2013 |
| q00 | 13-0637 | M_Kotewitz | 17.06.2013 |
| p00 | 13-0335 | R_Hochheim | 27.03.2013 |

| | date | name |
|--------|------------|--------------|
| drawn | 14.01.2004 | H_Muehlfelln |
| check. | 09.01.2017 | T_Koschel |
| appr. | 13.01.2017 | C_Anfang |

title: **Montageanleitung
 assembly instruction**

drawing-no.: **MA_59V042** sheet: **7**
 of: **9**

1

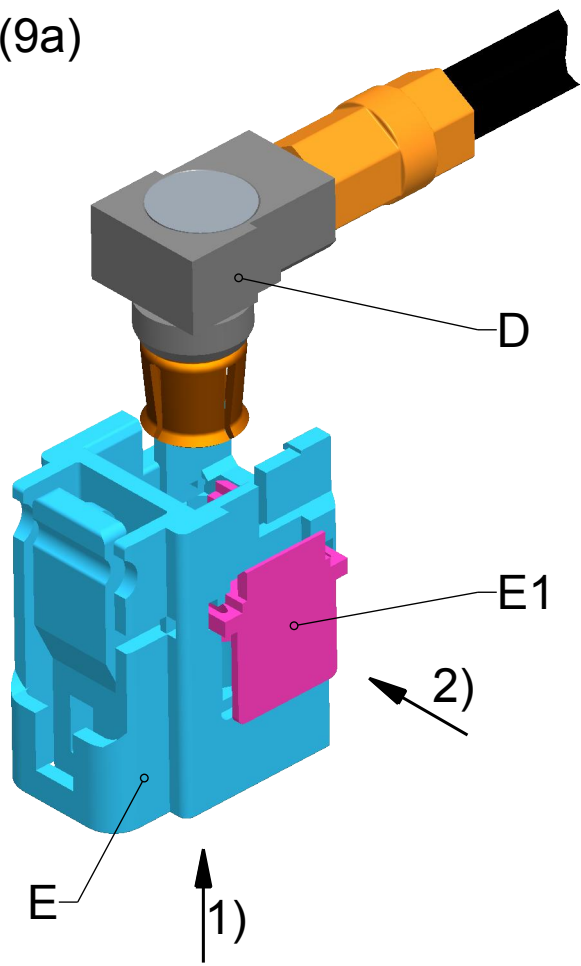
2

3

4

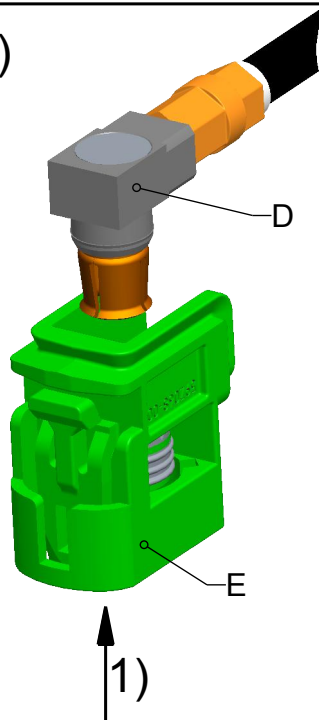
© ROSENBERGER HOCHFREQUENZTECHNIK GMBH & Co. KG
 The reproduction, distribution and utilization of this document as well as the communication of its contents to others without express authorization is prohibited. Offenders will be held liable for the payment of damages. All rights reserved in the event of the grant of patent, utility model or design.

(9a)



- 1) Steckerkörper "D" mit angecrimpten Kabel in Gehäuse "E" einführen bis Kontakt spürbar einrastet.
 - 2) Sekundärsicherung "E1" vollständig bis zur spürbaren Verrastung eindrücken.
-
- 1) Push in the connector body "D" with cable into the plastic housing "E" until the insert engages perceptibly.
 - 2) Push secondary lock "E1" completely until stop.

(9b)



- 1) Steckerkörper "D" mit angecrimpten Kabel in Gehäuse "E" einführen bis Kontakt spürbar einrastet. Auf exakte Ausrichtung achten
-
- 1) Push in the connector body "D" with cable into the plastic housing "E" until the insert engages perceptibly. Pay attention to exact alignment

Darstellung zeigt montierten Zustand.
 Drawing shows connector fully assembled.

Rosenberger

general tolerance ISO 2768 mH
 assembly instr.: ---
 panel piercing: ---

scale: 3:1 (2:1)
 series: ---

crimp insert: ---
 cable: ---

vertraulich / confidential

| rev. | change-no | name | date |
|------|-----------|-------------|------------|
| u00 | 16-1628 | M_Steinbach | 20.12.2016 |
| t00 | 15-1459 | M_Kolbe | 29.04.2016 |
| s00 | 14-1556 | T_Koschel | 27.10.2014 |
| r00 | 13-1291 | M2_Mueller | 14.11.2013 |
| q00 | 13-0637 | M_Kotewitz | 17.06.2013 |
| p00 | 13-0335 | R_Hochheim | 27.03.2013 |

| | date | name |
|-------|------------|--------------|
| drawn | 14.01.2004 | H_Muehlfelln |
| check | 09.01.2017 | T_Koschel |
| appr. | 13.01.2017 | C_Anfang |

title: **Montageanleitung
 assembly instruction**

drawing-no.: MA_59V042

sheet: 8
 of: 9

remarks: .

PD_FB_01
 -METRIC-
 ISO-Projektion Methode 1

© ROSENBERGER HOCHFREQUENZTECHNIK GMBH & Co. KG
 The reproduction, distribution and utilization of this document as well as the communication of its contents to others without express authorization is prohibited. Offenders will be held liable for the payment of damages. All rights reserved in the event of the grant of patent, utility model or design.

PD_FB_01

ISO-Projektion
 Methode 1
 -METRIC-

1

2

3

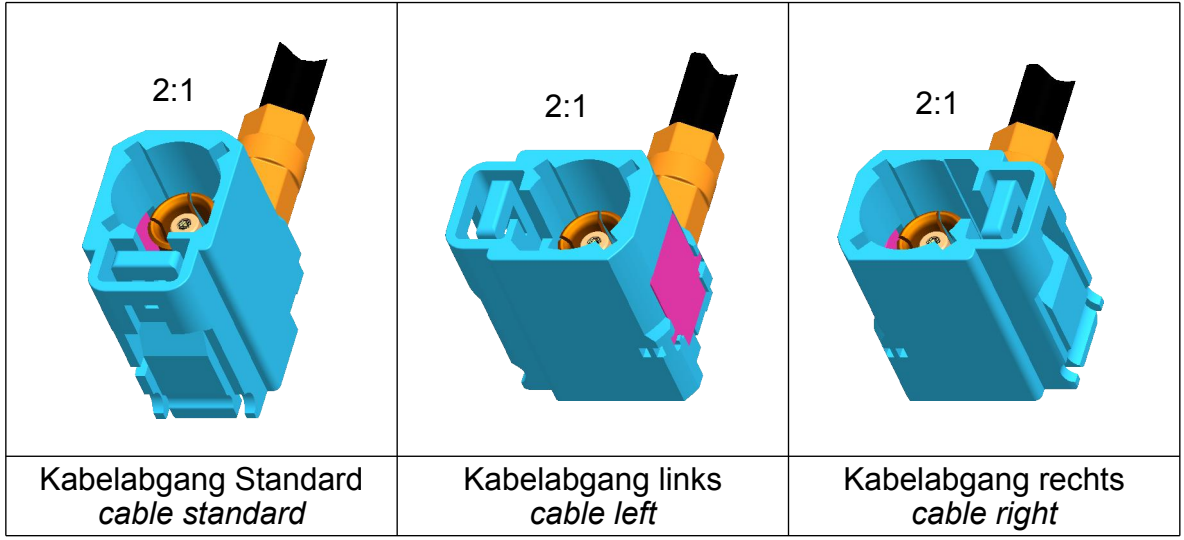
4

A

(10)

A

B



B

C

C

D

D

E

Darstellung zeigt montierten Zustand.
Drawing shows connector fully assembled.

E

| <h1>Rosenberger</h1> | | | | <i>general tolerance</i> ISO 2768 mH | | <i>assembly instr.:</i> --- <i>panel piercing:</i> --- | | <i>scale:</i> 3:1 <i>series:</i> --- --- | | <i>crimp insert:</i> --- <i>cable:</i> --- --- | | | | | | | | | | | | | | | | | | | | | | | | | | | |
|--|-----------|-------------|------------|---|-----------|---|------|--|---------|--|------------|-----|---------|---------|------------|-----|---------|-----------|------------|-----|---------|------------|------------|-----|---------|------------|------------|-----|---------|------------|------------|---|--|--|--|---------------------------|--|
| | | | | vertraulich / confidential | | | | <i>drawn</i> 14.01.2004 H_Muehlfelln <i>check.</i> 09.01.2017 T_Koschel <i>appr.</i> 13.01.2017 C_Anfang | | <i>title:</i> <h2>Montageanleitung</h2> <h3>assembly instruction</h3> | | | | | | | | | | | | | | | | | | | | | | | | | | | |
| <table border="1"> <thead> <tr> <th>rev.</th> <th>change-no</th> <th>name</th> <th>date</th> </tr> </thead> <tbody> <tr> <td>u00</td> <td>16-1628</td> <td>M_Steinbach</td> <td>20.12.2016</td> </tr> <tr> <td>t00</td> <td>15-1459</td> <td>M_Kolbe</td> <td>29.04.2016</td> </tr> <tr> <td>s00</td> <td>14-1556</td> <td>T_Koschel</td> <td>27.10.2014</td> </tr> <tr> <td>r00</td> <td>13-1291</td> <td>M2_Mueller</td> <td>14.11.2013</td> </tr> <tr> <td>q00</td> <td>13-0637</td> <td>M_Kotewitz</td> <td>17.06.2013</td> </tr> <tr> <td>p00</td> <td>13-0335</td> <td>R_Hochheim</td> <td>27.03.2013</td> </tr> </tbody> </table> | | | | rev. | change-no | name | date | u00 | 16-1628 | M_Steinbach | 20.12.2016 | t00 | 15-1459 | M_Kolbe | 29.04.2016 | s00 | 14-1556 | T_Koschel | 27.10.2014 | r00 | 13-1291 | M2_Mueller | 14.11.2013 | q00 | 13-0637 | M_Kotewitz | 17.06.2013 | p00 | 13-0335 | R_Hochheim | 27.03.2013 | <i>drawing-no.:</i> MA_59V042 | | | | <i>sheet:</i> 9 | |
| rev. | change-no | name | date | | | | | | | | | | | | | | | | | | | | | | | | | | | | | | | | | | |
| u00 | 16-1628 | M_Steinbach | 20.12.2016 | | | | | | | | | | | | | | | | | | | | | | | | | | | | | | | | | | |
| t00 | 15-1459 | M_Kolbe | 29.04.2016 | | | | | | | | | | | | | | | | | | | | | | | | | | | | | | | | | | |
| s00 | 14-1556 | T_Koschel | 27.10.2014 | | | | | | | | | | | | | | | | | | | | | | | | | | | | | | | | | | |
| r00 | 13-1291 | M2_Mueller | 14.11.2013 | | | | | | | | | | | | | | | | | | | | | | | | | | | | | | | | | | |
| q00 | 13-0637 | M_Kotewitz | 17.06.2013 | | | | | | | | | | | | | | | | | | | | | | | | | | | | | | | | | | |
| p00 | 13-0335 | R_Hochheim | 27.03.2013 | | | | | | | | | | | | | | | | | | | | | | | | | | | | | | | | | | |
| <i>remarks:</i> . | | | | <i>of:</i> 9 | | | | | | | | | | | | | | | | | | | | | | | | | | | | | | | | | |

F

1

2

3

4